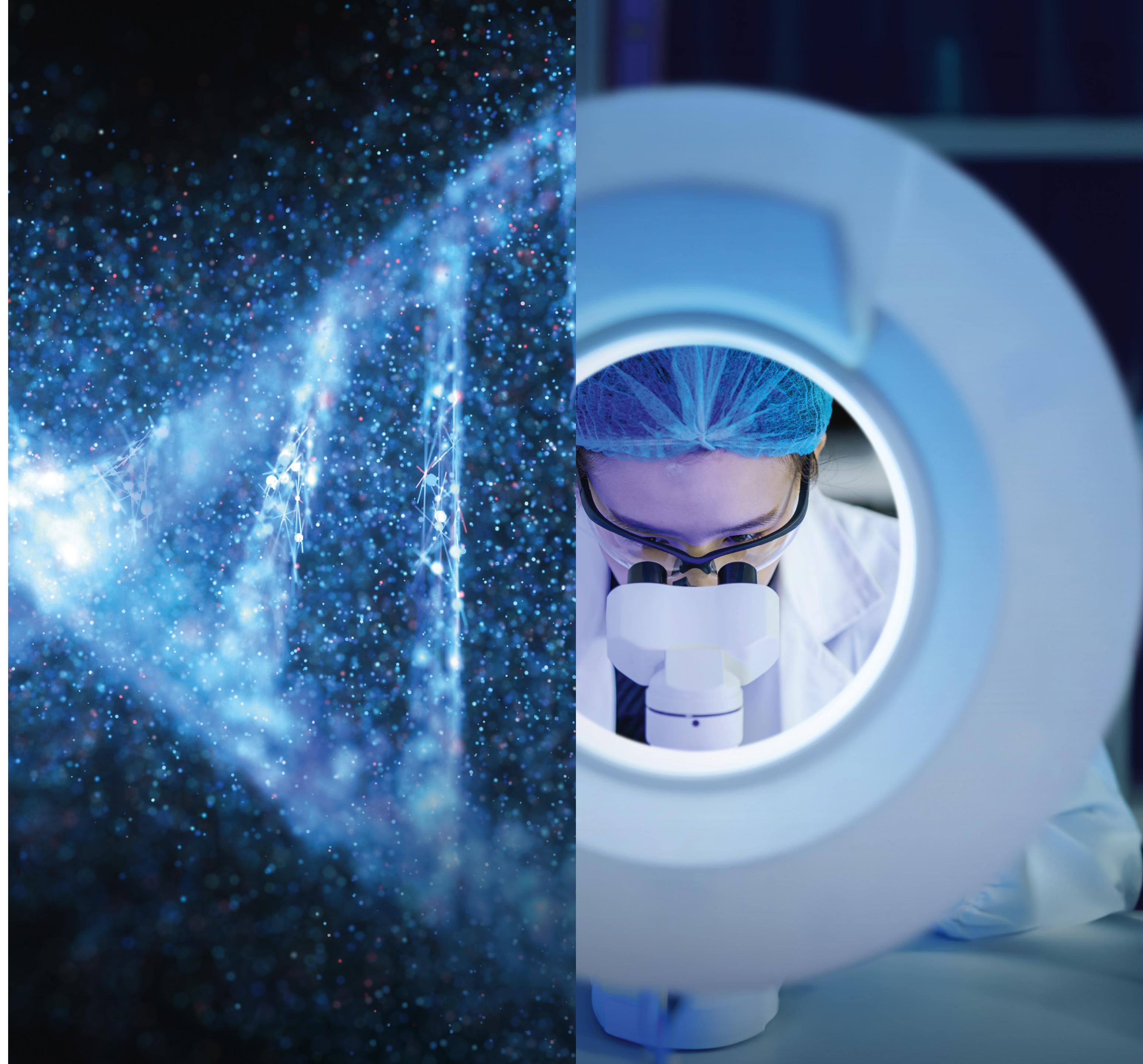


AstraZeneca Sustainability Data Reporting Criteria 2025



Contents

Climate and nature action	3
Health equity and Health systems resilience	19
How we do business	22
Data and methodology adjustments	34

Overview

Our Reporting Criteria provides definitions and methodologies for the sustainability metrics reported in our Annual Report 2025 and Sustainability Data Annex 2025. We aim to provide transparency into how we define our metrics used to measure progress on our sustainability strategy.

Standards

Our sustainability information and data are prepared in accordance with internal definitions. Where relevant, internal definitions draw on existing standards and available guidelines such as the Sustainability Accounting Standards Board (SASB) standard for the Biotechnology and Pharmaceutical sector.

Greenhouse gas emissions are reported in accordance with the World Resource Institute / World Business Council for Sustainable Development Greenhouse Gas (GHG) Protocol: A Corporate Accounting and Reporting Standard, Revised Edition (2015) and Corporate Value Chain (Scope 3), Accounting and Reporting Standard (2011).

Boundary

The reporting covers the Group for the period 1 January 2025 to 31 December 2025, unless otherwise stated.

Restatement

As we enhance our sustainability reporting, we may revise metrics reported when more accurate data becomes available or to ensure meaningful, consistent comparisons over time. We typically revise if the change shifts the reported figure by at least 5%. See data and methodology adjustments on page 34 for more information.

Rounding

Figures may be rounded to the nearest million, thousand, hundred, whole number, or decimal.

Use of terms

AZ SHE System refers to the centralised Health, Safety and Environmental reporting system used in AstraZeneca.

SHE refers to Safety, Health and Environment at AstraZeneca.

GHG refers to greenhouse gas.

Where a target status is on plan, it refers to progress to date being consistent with the expected trajectory required to achieve the target within the defined timeframe. While lagging refers to progress being made, where delivery is behind the expected trajectory.

Climate and nature action

Greenhouse Gas Reporting Methodology

We follow the GHG Protocol Principles for emissions reporting. Emissions are reported in carbon dioxide equivalents (tCO₂e), which standardises the climate effects of different GHGs by using global warming potential (GWP) values. GWPs represent the different efficiencies for absorbing long-wave radiation and the atmospheric lifetime of the gas and are measured versus carbon dioxide (CO₂). We use the Intergovernmental Panel on Climate Change (IPCC) Fifth Assessment Report (AR5) GWP values on a 100-year period (GWP100) excluding feedback loops, as agreed by the United Nations Framework Convention on Climate Change (UNFCCC).

Identifying and calculating GHG emissions

We utilise a range of calculation methods for reporting emissions due to the complex nature of our business and value chain. Primary data is considered to be data provided by suppliers or value chain partners related to specific activities. Secondary data is not from specific activities and includes industry-average data, for example proxy data or environmentally-extended economic input-output (EEE-IO) models. As part of continuous improvement, AstraZeneca will increase the proportion of primary activity data used in GHG reporting, as methods to do so become available.

Emission factors used for calculating emissions are often lagged by one year. This is because a wide range of sources are used within AstraZeneca's GHG reporting with different update schedules. To maintain consistency and allow for targets to be set internally without being impacted by emission factor changes, updates are applied at the start of each reporting year. Emission factors are applied in a consistent way across reporting years.

Reported values represent best available data at the time of reporting. Where data is unavailable, estimates are applied.

Boundary

AstraZeneca GHG inventory is determined using a financial control approach and emissions are allocated into the following categories: Scope 1, Scope 2, Scope 3, Biogenic emissions.

Target boundary

Category 9 is excluded from the 2030 and 2045 target boundary.

Baseline

Baseline Scope 1 and 2 performance is tracked relative to a 2015 baseline year. Scope 3 performance is tracked relative to a 2019 baseline year. The baseline years are representative of normal operating conditions and the difference in baseline years between emission scopes is due to availability of data.

Recalculations to baseline GHG data occurs to ensure that real changes to emissions are captured rather than a result of AstraZeneca structural (acquisitions, divestments, mergers) or methodology changes (error correction or calculation adjustments). This enables consistency to be maintained over time. Recalculation will be considered dependent upon significance to GHG emissions with updates disclosed. An internal procedure sets out the thresholds and process for recalculation and that adjustments are logged and communicated to our assurance providers as part of annual reporting.

Intensity reporting

Our intensity metric is based on emissions from Gross Scope 1 and 2 GHG emissions (Market-based) and Gross Scope 3 GHG emissions per million of Total Revenue. Our reporting currency is US dollars. The intensity metric includes emissions and revenue data from Alexion, which was acquired in 2021.

Scope 1 are direct greenhouse gas (GHG) emissions that occur from sources that are controlled or owned by AstraZeneca.

This includes GHGs from direct fuel combustion, process and engineering fugitive emissions (for example, refrigerant gases and solvents) at sites and from fuel use in AstraZeneca's commercial fleet (leased vehicles). All AstraZeneca owned sites are in the Scope 1 reporting boundary, together with leased sites that trigger inclusion based upon area, full time employees (FTEs), and lease length.

Data is collected from across AstraZeneca through the centralised Health, Safety and Environmental reporting system which contains inbuilt emission calculations.

Emission calculations

Direct fuel combustion emissions are calculated using fuel usage data across AstraZeneca sites. Emissions from natural gas, liquefied petroleum gas (LPG), bioenergy (non-CO₂) including biomethane, biogas, biomass, HVO100, along with backup fuel (gas oil and heavy fuel oil) consumption are calculated using UK Government Greenhouse Gas Conversion Factors (hereafter UK Government conversion factors).

Biomethane

AstraZeneca purchases biomethane certificates for some fossil gas usage in the UK, US, China and Europe. In 2025, supply of biomethane commenced via long-term commercial agreements with Vanguard Renewables in the US and Future Biogas in the UK. When fully operational, these collaborations are expected to enable up to 330 GWh of biomethane to be used across AstraZeneca's US and UK sites, equivalent to 70% of our total global gas consumption. A small number of certificates are also acquired directly through suppliers in Europe.

The reported Scope 1 emissions are calculated following the Greenhouse Gas Protocol's guidance on biogenic fuels, with AstraZeneca accounting for non-CO₂ greenhouse gases in our Scope 1 emissions. Additional details can be found in the Biogenic Emissions section of this document.

Fugitive emissions

We calculate fugitive emissions from both process and engineering activities using IPCC Fifth Assessment GWP. Process fugitive emissions are F-Gases released during the manufacture of our inhaler products that require propellants, emission rates per device manufactured are known from lifecycle assessment studies. Engineering fugitive emissions are based on top-ups of F-Gas containing equipment. Equipment is typically associated with heating, ventilation and air conditioning systems, chiller systems, or heat pumps. Conservatively, 100% of the F-Gas is assumed to have been released to the atmosphere. For corporate reporting, GWP100s are used as per reporting requirements.

Total consumed and emitted amounts of solvent are reported by AstraZeneca sites across three solvents categories (non-halogenated, halogenated dichloromethane and halogenated other). Data can be ascertained through emission monitoring or estimated on the basis of mass balance. The classification of a solvent (or Volatile Organic Compound) is based on EU regulations.

Fleet

Direct emissions from AstraZeneca's commercial fleet are calculated using a hybrid approach due to different data sources and reporting requirements used internationally. All markets (countries) report vehicle numbers, vehicle type (e.g. internal combustion engine (ICE), ICE hybrid, ICE plug-in hybrid, battery electric vehicle (BEV)), business distance driven and utilise one of three GHG calculation methods:

1. Fuel consumption data, for instance litres purchased, where emissions are calculated using UK Government conversion factors (fuels).
2. Average fleet fuel consumption factors sourced from vehicle manufacture specifications are multiplied by distance travelled to estimate fuel usage. Emissions are calculated using UK Government conversion factors (fuels).
3. Fleet average GHG intensity factors (grams CO₂e per kilometre) source from vehicle manufacture specifications that are provided by the third-party leasing company on a quarterly basis. Emissions are calculated by multiplying the intensity factor by distance travelled.

Some fuel consumption and distance are excluded as it is attributed to personal (non-business) use. Emissions associated with electric vehicles are captured within Scope 2 reporting.

Scope 2 are indirect GHG emissions that are generated from the purchased energy consumed by AstraZeneca that is electricity, imported steam, imported or district heat and cooling systems.

All AstraZeneca owned sites are in the Scope 2 reporting boundary, together with leased sites that trigger inclusion based upon area, FTEs, lease length, and data availability as well as electricity use for charging electric vehicles in our Commercial leased fleet.

Energy usage data is collected from across AstraZeneca through the centralised Health, Safety and Environmental reporting system which contains inbuilt emission calculations.

AstraZeneca reports both market-based and location-based Scope 2 emissions in line with the GHG Protocol Scope 2 Guidance, which requires dual external reporting.

Market-based factors are more specific to the site and local energy market, taking account of the residual energy mix a site is sourcing power from and any certified renewable power purchased by a site. Location-based factors are the grid average emissions factor for the country (or sub-region in the US) where a site is located.

Emission calculations

AstraZeneca currently purchases renewable electricity globally in line with The Climate Group's RE100 initiative criteria, in every market where this is possible. This enables AstraZeneca to report near zero market-based Scope 2 emissions associated with the purchased renewable electricity. To calculate location-based emissions, a range of emission factors are used:

- International Energy Association (IEA)
- US Emissions and Generation Resource Integrated Database (eGRID)
- UK Government conversion factors

On-site renewable generation

Electricity generated on-site from solar photovoltaics is reported as zero emissions within both market and location-based reporting approaches, subject to confirmation that either energy attribute certificates (EACs) are not created, or EACs are instantly retired by or on behalf of the AstraZeneca facility.

Additional energy sources

Alongside Scope 2 emissions resulting from electricity usage, AstraZeneca also utilises both imported steam and district heating and cooling. The sites that consume these energy sources work with suppliers to obtain emission factors specific to the suppliers' fuel mixes. These specific factors are used where available, otherwise UK Government emission factors are applied as a default. Supplier factors may not always reflect the most recent year and can be based on older data.

Fleet

Scope 2 emissions associated with electric vehicles from AstraZeneca's commercial fleet are calculated by first multiplying distance travelled by country-specific fleet average energy intensity (kilowatt-hours per kilometre driven). Emissions are then calculated using country-specific emission factors using the same approach as the AstraZeneca sites.

Some fuel consumption and distance are excluded as it is attributed to personal (non-business) use.

Scope 3 are all indirect GHG emissions (not included in Scope 2) that occur in the value chain of AstraZeneca, including both upstream and downstream emissions.

Category 1: Purchased goods and services

AstraZeneca uses a range of methodologies to calculate emissions associated with purchased goods and services. A methodology hierarchy is applied enabling the highest quality data to be used where available.

1	Life Cycle Assessment (LCA) and manufacturing data
2	Supplier provided emissions data
3	Spend based estimation

Life Cycle Assessment (LCA) and manufacturing data

AstraZeneca has an active product sustainability workstream which includes LCAs of current and future products. The LCA programme determines the type and magnitude of environmental impacts across our product value chains and is in line with ISO standards 14040 and 14044. Emissions are calculated for AstraZeneca products by multiplying product manufacturing data (standard manufacturing unit at the lowest tangible level, for instance single tablet or capsule) by emission factors calculated from product LCAs for the following lifecycle stages:

- API Manufacture
- Product Formulation
- Medical Device
- Packaging

These stages cover the 'cradle to gate' product footprint. For AstraZeneca products which are not covered by an LCA, proxy LCA data has been used based on product classification and modality.

Data is considered primary when emissions are calculated from product LCAs and secondary if proxy LCA data is applied.

Supplier provided emissions data

AstraZeneca encourages suppliers to submit climate targets and GHG emissions data to CDP Climate Survey as this enables supplier-specific emissions to be utilised in AstraZeneca's Scope 3 reporting. AstraZeneca requires that Scope 1, 2 and Scope 3 upstream (1-8) categories where relevant are included.

As data is reported one year in arrears by suppliers into CDP, integration into Scope 3 is achieved through creating supplier-specific spend-intensity factors (kgCO₂e per USD). These are calculated by dividing total emissions by Total Revenue in the following calculation:

$$\frac{\text{Supplier Scope 1 + Scope 2 + Scope 3 (categories 1-8) [kg CO}_2\text{e]}}{\text{Supplier Total Revenue (USD)}}$$

To generate absolute emissions associated with AstraZeneca, our total spend with this supplier is multiplied by the supplier spend-intensity factor.

Emissions calculated using this method is considered to be primary data.

Spend-based estimation

Remaining indirect emissions that are not covered by the aforementioned methodologies are calculated using the Comprehensive Environmental Data Archive (CEDA) Version 2025, which is a multi-regional economic input-output database with a baseline year of 2023. CEDA provides information about embodied lifecycle emissions per unit spent on items used in close to 400 sectors of the economy. Emissions are calculated using AstraZeneca's expenditure information on items and services, which are categorised in a procurement database. CEDA's spend-based emissions factors (purchaser price) are applied to each procurement category to calculate GHG emissions. These spend-based emission factors are applied at a supplier country level enabling regional differences to be accounted for.

Some AstraZeneca expenditure is excluded (based on general ledger (GL) accounts) as it is not directly attributable to a purchase such as inventory valuation adjustments, intercompany transfers, etc. Additionally some spending is excluded for having no specifically attributable emissions, such as tax, duties, wages and salaries, sponsorship, etc.

Certain spend data is removed from Category 1 calculations if it is associated with other GHG categories, for example capital goods, logistics and business travel.

Emissions calculated using industry average spend-based emission factors is considered to be secondary data.

Category 2: Capital Goods

AstraZeneca's classification of capital goods is aligned to our financial reporting approach.

Where available, AstraZeneca utilises embodied carbon reports based on the final design of projects to calculate emissions. Embodied carbon emissions cover the product stage (raw materials, transport, manufacturing) as well as the assembly stage (transport and construction process). Emissions are proportioned across the years construction occurs.

Remaining emissions are calculated by grouping project spend into sustainability categories. Emissions are then calculated using CEDA emission factors.

Intangible assets and right of use assets are excluded on the basis of having no attributable emissions or is already counted in our GHG inventory.

Emissions data from embodied carbon reports are considered to be primary data, with spend based emissions considered as secondary data.

Category 3: Fuel and energy related activities (not included in Scope 1 or 2)

This category includes emissions from three distinct activities.

Upstream emissions of purchased fuels

Stationary combustion

UK Government Well-to-Tank (WTT) emission conversion factors are used to calculate upstream emissions per fuel type.

Mobile combustion

AstraZeneca's commercial fleet, kilometres driven is multiplied by UK Government (WTT) conversion factors for an average car. The direct emissions associated with AstraZeneca's commercial fleet are captured within Scope 1 reporting.

Upstream emissions from purchased electricity, heat, steam and cooling

Electricity (including electric fleet charging)

IEA generation emission factors and UK Government conversion factors were used to create generation WTT and transmission and distribution WTT specific to each country.

Imported steam and district heating and cooling

Supplier-specific emission factors are used where available, otherwise UK Government conversion factors (generation WTT) per activity/fuel type are applied.

Transmission and Distribution (T&D) losses

Electricity

Calculated using IEA T&D emission factors. For AstraZeneca sites within the United States, regional eGrid T&D emission factors are used.

Imported steam and district heating and cooling

Supplier-specific emissions factors are used where available, otherwise UK Government T&D conversion factors are applied.

All emissions data is considered to be primary data in this category.

Category 4: Upstream transportation and distribution

This includes all primary and secondary distribution freight services purchased by AstraZeneca.

AstraZeneca collects activity data from freight forwarders across air, sea and rail. The unit of measure is tonne-kilometre (tkm) and is calculated using gross weight and port to port distance (reflecting the freight mode). Emissions are then calculated using UK Government conversion factors specific to freight mode.

Both direct emissions and WTT are included. Air freight emissions include the non-CO₂ climate impacts known as radiative forcing for example water vapours, contrails, NO_x.

Activity data is also used for a proportion of EU road freight. Tonne-kilometre is calculated using number of pallets and an assumed weight per pallet to estimate total weight and reported distance. Emissions are calculated using UK Government conversion factors, with two different vehicle types applied ('van – average' and 'articulated refrigerated >33t with average laden').

A small proportion of freight emission data is provided directly by suppliers.

Remaining emissions are calculated using the same economic input-output method used for Scope 3 Category 1. The CEDA 2025 database is mapped against AstraZeneca procurement categories and emissions calculated. Some AstraZeneca spend is excluded by utilising our General Ledger (GL) accounts to identify expenses that are not directly attributable to invoices, for example accruals, intercompany transfers, prepayments, etc.

Emissions calculated from activity/supplier data are considered to be primary data with secondary data emissions calculated using the spend-based approach.

Category 5: Waste generated in operations

Routine, final finished product (commercial returns) and construction waste data is collected from across AstraZeneca through the centralised Health, Safety and Environmental reporting system. It contains inbuilt emission calculations, based upon waste disposal route, for example recycling, incineration with and without energy recovery. Emissions are calculated using emission factors from 2006 IPCC Guidelines for National Greenhouse Gas Inventories Volume 2 and UK Government conversion factors for waste disposal.

AstraZeneca's manufacturing site in Sweden uses a supplier specific hazardous incineration emission factor based on chimney measurements at the incineration site.

Emissions are calculated from all AstraZeneca sites where waste data is available and is considered to be primary data.

Category 6: Business travel

Air travel activity data is collected via AstraZeneca's travel booking agent. Emission calculations are based on flight distance and cabin class and account for direct and WTT emissions. Emissions are calculated using 2022 UK Government conversion factors, reflecting pre-pandemic travel level. These factors account for the non-CO₂ climate impacts from radiative forcing, such as water vapours, contrails, NO_x, hence a 1.9 multiplier is applied.

For AstraZeneca chartered flights, CO₂ emissions are calculated for the entire aircraft using average fuel burn volumes for the specific aircraft model. Non CO₂ (methane, nitrous oxide and radiative forcing) and WTT emissions are calculated using methodology outlined in UK Government conversion factors.

For private jets, AstraZeneca obtains fuel usage and calculates emissions using UK Government conversion factors for aviation turbine fuel. Non-CO₂ (methane, nitrous oxide and radiative forcing) are calculated using the methodology outlined in UK Government conversion factors.

Hotel-stay activity data is collected via AstraZeneca's travel booking agent. Emissions are calculated by multiplying number of room nights by a country-specific emission factor for the footprint per occupied room. Emission factors applied are derived from the Cornell Hotel Sustainability Benchmarking Index. The median of full service non-resort category is applied where possible, if unavailable for a country, the median all hotel factor is used. For those countries not represented in the data set, an average factor is applied.

Grey fleet activity data is collected through the centralised Health, Safety and Environmental reporting system. Grey fleet is defined as vehicles owned by employees and driven by employees for business purposes. The direct and indirect (WTT) emissions are calculated by multiplying distance travelled (km) by UK Government conversion factors.

Car rental activity data is collected via AstraZeneca's travel booking agent. Information on the distance travelled is unavailable, therefore an estimate of (160 km per day) is applied. Emissions are calculated by multiplying estimated distance by UK Government conversion factors (vehicle classifications).

Remaining emissions are calculated using the same economic input-output method used for Scope 3 Category 1. The CEDA 2025 database is mapped against AstraZeneca spend categories and emissions calculated. Some AstraZeneca spend is excluded by utilising our General Ledger (GL) accounts to identify expenses that are not directly attributable to invoices, for example accruals, inventory adjustments, intercompany transfers, prepayments, etc.

AstraZeneca is unable to calculate emissions for car rentals, hotels or air travel booked outside of our booking platform. As this is anticipated to only occur in exceptional circumstances, this impact is expected to be small. Occasionally, AstraZeneca also covers business travel expenses for non-employees, such as healthcare professionals and recruitment candidates. These cases represent a small percentage of total emissions and are included in Category 6.

Emissions calculated from activity/supplier data is considered to be primary data with secondary data emissions calculated using the spend-based approach.

Category 7: Employee commuting

No employee commuting data is available for AstraZeneca employees. Emissions from commuting are calculated based on full time equivalents (FTEs) at each AstraZeneca site using a global emission factor. This factor was derived from country-specific commuting model developed by an external consultancy in 2020. Assumptions are applied to account for employees working within different functions i.e. Operations (manufacturing) and R&D employees would typically be working on-site for a greater proportion of their time than enabling functions employees. Additionally, commercial employees may have a company car and commutes are captured within Scope 1 reporting.

In addition to commuting emissions, AstraZeneca calculates emissions associated with homeworking. Homeworking emissions are calculated using kWh/month/FTE. Estimated energy usage accounts for gas use, desk electricity and lighting electricity and is based on 240 working days a year and 160 working hours a month. Emissions have then been calculated using country specific emission factors (UK Government conversion factors and IEA) multiplied by the number of employees per country. Assumptions have been applied to account for a mix of homeworking and commuting.

Emissions in this category are considered to be from secondary data.

Category 8: Upstream leased assets

Emissions from leased AstraZeneca sites outside of the Scope 1 and Scope 2 reporting boundary are reported within this category.

For sites where energy data is available, emissions are calculated using the same methodology outlined in Scope 1, Scope 2 and Scope 3 Category 3.

For sites where AstraZeneca has no access to energy data, emissions are calculated by creating energy intensities from Scope 1 and 2 AstraZeneca sites. Total gas and electricity consumption for AstraZeneca sites is divided by floor area (split by usage type for example office, manufacturing, etc.) to create AstraZeneca-specific energy intensities for each building use type and energy source. The office energy intensity benchmark is calculated from sites that only have office function. These energy intensities are applied to AstraZeneca upstream leased sites based on their building composition to estimate electricity and gas usage. IEA and UK Government conversion factors are applied (including direct and upstream emissions) to convert energy data into emissions. It is assumed that only natural gas and electricity are consumed by the properties. F-Gas emissions are not

estimated for upstream leased assets due to the high uncertainty and the low materiality for the uses that are normally under this category, that is, shared commercial offices.

Emissions calculated using site energy data are considered to be primary data and emissions calculated from energy intensity benchmarks are considered as secondary data.

Category 9: Downstream transportation and distribution

For AstraZeneca, downstream distribution relates to wholesaler distribution, customer storage of products, for example at a hospital or pharmacy and patient travel to collect medicines or be administered medicines. All other emissions associated with transporting and distributing products is captured within category 4 (upstream).

Emissions are calculated for patient travel by utilising manufacturing data (stock keeping unit, an individual pack) and informed assumptions (4km average travel distance, 50% public transport usage, 30% attribution to AstraZeneca products). Emissions are generated using UK Government conversion factors.

Emissions from additional wholesaler movements and refrigerated storage at customer sites are considered immaterial. A conservative allowance of 15,000 tCO₂e is included to cover these residual emissions.

There is high uncertainty with emissions in this category and we continue to improve and enhance the methodology. Emissions are excluded from the boundary of AstraZeneca's verified near-term and net-zero science-based targets.

Emissions in this category are considered to be from secondary data.

Category 10: Processing of sold products

Assessed and not relevant as no further processing of sold products takes place for any of AstraZeneca's products.

Category 11: Use of sold products

Emissions from the patient use of sold inhalation devices containing propellants that are GHGs (F-Gases) is quantified in this category. The emissions associated with the use of other sold products that do not include F-Gas-based propellants (e.g. dry powder inhalers) are assessed as part of product lifecycle assessments and to date have been found to be immaterial.

Production volumes for the inhalation medicine devices containing F-Gases are collected via an internal production database and multiplied by the nominal propellant volumes for each device type, substantiated by third party environmental life-cycle assessment of this product portfolio. GWP emission factors derived from IPCC AR5 are multiplied by the propellant volumes to calculate total GHG emissions from the use of inhalers. It is assumed that the entire charged volume of propellant is discharged to atmosphere during use of the product. Emissions are reported based on manufacture date as a simplified way of avoiding making low-confidence assumptions regarding shelf-life and patient use behaviours – this method also supports forward looking forecasting of emissions using production forecasts.

Emission data is considered to be primary data for this category.

Category 12: End-of-life treatment of sold products

For AstraZeneca products, emissions are calculated by multiplying standard manufacturing units with emission factors from product LCAs for the 'end of life' stage. If products are not covered by an LCA, proxy LCA data was used based on product classification and modality.

Emission data is considered to be primary data for this category where product LCA data is used. Emissions calculated from proxy LCA data are considered as secondary data.

Category 13: Downstream leased assets

AstraZeneca infrequently assumes the role of landlord. Nevertheless, such circumstances may arise, for instance, during partial asset divestment or transitional periods. It is incorporated as a reportable category within AstraZeneca's Scope 3 emissions.

Emissions are calculated by creating energy intensities from Scope 1 and 2 AstraZeneca sites. Total gas and electricity consumption for AstraZeneca sites is divided by floor area (split by usage type e.g. office, manufacturing, etc.) to create AstraZeneca-specific energy intensities for each building type. The office energy intensity benchmark is calculated from sites that only have office function. These energy intensities are applied to AstraZeneca downstream leased sites based on their building composition to estimate electricity and gas usage. IEA and UK Government conversion factors are applied (including direct and upstream emissions) to convert energy data into emissions. It is assumed that only natural gas and electricity are consumed by the assets.

Emissions in this category are considered to be from secondary data.

Category 14: Franchises

Assessed and not relevant as AstraZeneca does not have any franchises.

Category 15: Investments

Assessed and not material.

Biogenic emissions are CO₂ emissions associated with fuels determined to be net zero since the fuel source itself absorbs an equivalent amount of CO₂ during the growth phase as the amount of CO₂ released through combustion.

This refers to emissions associated with bioenergy sources across several sites, associated with biogas, biomethane, and biomass (imported steam from off-site straw combustion). Emissions are calculated by multiplying fuel consumption with UK Government conversion factors.

Biomethane certificates are applied in Scope 1 with a CO₂ factor of zero.

AstraZeneca Brazil's commercial vehicle fleet utilises bioethanol as a fuel.

The non-CO₂ direct GHG emissions of bioenergy sources, for instance the small amounts of methane (CH₄) and nitrogen oxide (N₂O) are reported within Scope 1. The upstream GHG emissions (WTT) associated with extraction, refining and transportation of the bioenergy source reported within Scope 3 Category 3 using UK Government conversion factors.

Metric (Units)	Definition	Methodology	Boundary
Road fleet			
EV100: Battery electric vehicles (BEVs) (%)	<p>EV100 refers to a commitment made by AstraZeneca through a global initiative led by the Climate Group to transition to an electric vehicle fleet.</p> <p>Battery electric vehicles refers to those vehicles controlled by AstraZeneca in a commercial fleet that are categorised as battery electric.</p>	<p>Data is captured from sites through AZ SHE System. It is reported on a monthly basis and reviewed globally every quarter by category type: petrol internal combustion engine, diesel, hybrid, plug-in-hybrid or battery electric.</p> <p>Data is cross-referenced with the procurement function each quarter. AstraZeneca data is provided quarterly, featuring vehicle numbers by category type.</p> <p>Calculation: The number of leased and owned vehicles that are battery electric divided by total number of vehicles, then multiplied by 100.</p> <p>The calculation is performed annually.</p>	Vehicles directly controlled (owned or leased) are included.
Energy consumption (MWh)			
Total energy consumption from fleet	Energy consumption from fleet refers to the fuel and electricity consumed by AstraZeneca owned and leased vehicles for business activities.	<p>Energy calculation for fuel consumption based on management report of fuel transactions for business activities, or business distance travelled multiplied by the official conversion factors published by the UK Department for Environment, Food & Rural Affairs (DEFRA).</p> <p>Fuel and distance data is collected from sites through AZ SHE System. It is reported on a monthly basis and reviewed globally every quarter.</p> <p>Calculation: The sum of total fuel used in business activities, the business distance travelled, and the electricity used in battery-operated vehicles, all converted into MWh.</p> <p>This calculation is performed annually.</p>	Vehicles used for business activity which are directly controlled (owned or leased) are included.
Total energy consumption from sites	<p>Energy consumption from sites refers to the electricity, steam, heat and fuel consumed by AstraZeneca.</p> <p>Included is energy generated onsite and purchased, and energy sourced through renewable and non-renewable methods.</p>	<p>Data is collected from sites through AZ SHE System. It is reported on a monthly basis and reviewed globally every quarter.</p> <p>Calculated based on meter readings for on-site energy sources and invoices for purchased energy.</p>	<p>All AstraZeneca-owned sites are included in the Scope 1 & 2 reporting boundary.</p> <p>Leased sites are included when they meet internal thresholds and excluded when they do not. The threshold considers factors such as floor area, number of full-time employees (FTEs), lease duration, and data availability.</p> <p>In-scope are all energy sources which include fossil gas, green gas, heavy fuel oil, HVO100, gas oil, power, steam, and district heating and cooling.</p>

Metric (Units)	Definition	Methodology	Boundary
Total energy consumption	Total Energy consumption refers to sum of energy consumption from fleet and site.	See above.	See above.
Site energy management			
EP100: Energy productivity (million of Total Revenue per GWh energy consumption)	<p>EP100 is a commitment made by AstraZeneca through a global initiative led by the Climate Group to measure and report on energy efficiency improvements.</p> <p>Energy productivity refers to the ratio of Total Revenue generated per GWh of energy consumption from sites.</p>	<p>See Total energy consumption from sites.</p> <p>Total energy consumption from sites, measured in megawatt-hours (MWh), is converted to gigawatt-hours (GWh) by dividing the reported figure by 1,000.</p> <p>Calculation: Total Revenue in millions of USD, provided by Group Finance after audit, then divided by the total energy use in GWh.</p>	<p>All AstraZeneca-owned sites are included in the Scope 1 & 2 reporting boundary.</p> <p>Leased sites are included when they meet internal thresholds and excluded when they do not. The threshold considers factors such as floor area, number of full-time employees (FTEs), lease duration, and data availability.</p>
Renewable energy consumption – electricity and heat (MWh)	<p>Renewable energy consumption refers to consumption of energy generated through certified renewable sources.</p> <p>Both self-generated and purchased energy are included.</p>	See Total energy consumption from sites.	See Total energy consumption from sites.
Imported electricity – renewable (%)	<p>Imported electricity refers to the supply of electricity to AstraZeneca sites. The percentage represents the renewable proportion of total imported electricity.</p> <p>Renewable electricity consumption refers to the electricity consumed by AstraZeneca generated from renewable sources. For electricity to be considered 'renewable', the source must be certified.</p>	<p>Data is collected from sites through AZ SHE System. It is reported on a monthly basis and reviewed globally every quarter.</p> <p>Renewable classification is aligned to the RE100 reporting criteria.</p> <p>Calculation: Total renewable imported electricity is divided by total imported electricity, then multiplied by 100.</p>	<p>See Total energy consumption from sites.</p> <p>All imported electricity is in-scope.</p> <p>Electricity generated on-site is out of scope.</p>
RE100: Renewable electricity consumption (%)	<p>RE100 is a commitment made by AstraZeneca through a global initiative led by the Climate Group to transition to renewable electricity.</p> <p>See above.</p>	<p>Data is collected from sites through AZ SHE System. It is reported on a monthly basis and reviewed globally every quarter.</p> <p>Methodology is aligned to the RE100 reporting criteria.</p>	<p>See Total energy consumption from sites.</p> <p>In-scope is electricity sourced from: combined heat and power systems; imported power purchased through Power Purchase Agreements, Green Tariffs and Unbundled certificates; and Power generated on-site using Solar PV.</p>
Onsite self-generated electricity from non-renewable sources (MWh)	<p>Onsite self-generated electricity refers to electricity production directly at AstraZeneca facilities.</p> <p>Non-renewable sources refers to energy generated that cannot be classified as derived from renewable sources.</p>	Data is collected from sites through AZ SHE System. It is reported on a monthly basis and reviewed globally every quarter.	<p>See Total energy consumption from sites.</p> <p>Electricity generated on-site is in-scope.</p> <p>All imported electricity is out of scope.</p>

Metric (Units)	Definition	Methodology	Boundary
Supply chain engagement (% spend with verified SBTs)			
Category 1 – Purchased goods and services, Category 2 – Capital goods (%)	Verified SBTs refers to emissions reduction targets that have been independently validated by the Science Based Targets initiative (SBTi) to confirm that the minimum quantitative and qualitative criteria are met.	Spend data is sourced from AstraZeneca's financial systems. The proportion of spend is determined using spend data from the reporting year, which undergoes quality checks before being input into the sustainability initiative tracking tool. Within this tool, each supplier is assigned an SBTi status, updated manually on a weekly basis by referencing the SBTi public website, which lists companies with verified targets. The tool analyses the data to calculate the proportion of eligible spend relative to SBTi status.	Top 95% of supplier spend. Alexion is in-scope from 2022 onwards. Supplier spend that are categorised as Category 1 Purchased goods and services and Category 2 Capital goods.
Category 4 – Upstream transportation and distribution (%)	See above.	See above.	See above. Supplier spend that is categorised as Category 4 Upstream transportation and distribution.
Category 6 – Business travel (%)	See above.	See above.	See above. Supplier spend that are categorised as Category 6 Business Travel.
Safe active pharmaceutical ingredients (API) discharges			
Safe API discharges for AstraZeneca sites (%)	API refers to Active Pharmaceutical Ingredient. Safe refers to compliance with our established threshold for discharge concentrations.	API discharges are calculated and documented annually, with the data reported one year in arrears. Information is manually collected from site SHE leads and aggregated for each year. The calculation accounts for sites that manufacture multiple APIs by counting each API as a separate discharge. For instance, if a site formulates three APIs, it is counted as three distinct discharges in the calculation. Calculation: The number of safe discharges divided by the total number of discharges, then multiplied by 100.	All AstraZeneca owned manufacturing and formulation facilities are in-scope. 64 APIs are in-scope for 2025.
Safe API discharges from suppliers (%)	See above. Suppliers refers to Contracted Manufacturing Organisations (CMO) facilities.	See above. Data is captured by External Supply and Manufacturing team and manually aggregated on an annual basis, with data being reported one year in arrears. In 2025, data was requested directly from suppliers.	See above. All CMOs that formulate and manufacture APIs for AstraZeneca within the reporting year are in-scope.

Metric (Units)	Definition	Methodology	Boundary
Number of safe API discharge supplier assessments completed	A discharge assessment is the assessment of an API which may be discharged through waste water at a single site (e.g residues from equipment cleaning)	If a site manufactures multiple different APIs, each should be counted as a separate discharge. For instance, if a site formulates three APIs, it would result in three distinct discharge assessments. Data are reported one year in arrears.	All CMOs that formulate and manufacture APIs for AstraZeneca within the reporting year are in-scope.
Resource efficiency			
Total syntheses that meet resource efficiency target at launch (%)	<p>Total syntheses refers to combined reporting of small molecule API syntheses and monoclonal antibody syntheses.</p> <p>Resource efficiency refers to a defined target for Process Mass Intensity (PMI) and is a measure of total mass of materials in kilograms used per kilogram of drug substance produced.</p> <p>Small molecule API refers to a category of products where the active ingredient is an organic compound with low molecular weight.</p> <p>Monoclonal antibody refers to a category of products (MAbs) that have been produced in the laboratory to mimic natural antibodies to selectively and specifically target pathogenic proteins or antigens in response to infection and neutralise them.</p>	<p>When an in-scope product is launched, data and evidence is shared with the Product Sustainability team by Pharmaceutical Technology and Development (PT&D) and the Biopharmaceutical Development team for analysis.</p> <p>Percentage is cumulative, with 2015 as the baseline year. Total was based on 12 total syntheses since 2015.</p> <p>Calculation: The number of in-scope products that meet resource efficiency divided by total in-scope products launched since 2016, then multiplied by 100.</p> <p>Data is captured manually on a biannual basis.</p>	All newly launched products featuring novel APIs are considered in-scope if the development work was conducted at AstraZeneca, rather than by an alliance partner or Alexion.
Product value chain environmental impact			
Percentage of product sales revenue for brands scored against Product Sustainability Index (PSI)	Brands scored against the Product Sustainability Index identifies a number of launched products that have gone through the scoring process for AstraZeneca's internal PSI programme that includes data in five environmental impact categories.	<p>Data is captured manually on an annual basis. The revenue coverage data is based on 2024.</p> <p>Calculation: The Total Revenue of the brands scored against PSI is calculated by adding the Total Revenue for the relevant brands in 2024 and expressed as a percentage of the Total Revenue for 2024.</p>	All products within the launched portfolio are in scope.
Percentage of product sales revenue for brands with lifecycle assessment completed	Brands with a lifecycle assessment completed identifies a number of launched products that have gone through a streamlined lifecycle assessment (LCA) as part of AstraZeneca's internal LCA programme.	<p>Data is captured manually on an annual basis. The revenue coverage data is based on 2024.</p> <p>Calculation: The Total Revenue of the brands with an LCA is calculated by adding the Total Revenue for the relevant brands in 2024 and expressed as a percentage of the Total Revenue for 2024.</p>	All products within the launched portfolio are in scope.

Metric (Units)	Definition	Methodology	Boundary
Paper-based product packaging materials supplied from sustainable sources (%)	<p>Paper-based refers to products whose raw material is timber-based.</p> <p>Sustainable sources refers to suppliers that have been able to verify that the amount of timber products supplied to AstraZeneca is certified including but not limited to Forest Stewardship Council (any type), Programme for the Endorsement of Forest Certification (any type), Sustainable Farming Incentive (any type), Brazilian Forest Certification Programme or American Tree Farm System.</p>	<p>Data is captured in the WorldFavor platform for the year in arrears. Data collection took place from Q4 2025 –Q1 2026, for the reporting period of 2024.</p> <p>In scope suppliers are surveyed through the platform and insights are based on what suppliers report to us.</p> <p>Calculation: Percentage is calculated based on reported weight of timber products (metric tonnes). Total certificated weight reported is divided by total reported weight, then multiplied by 100.</p>	<p>In-scope are suppliers of timber products for primary, secondary, and tertiary packaging.</p> <p>Percentage is based on supplier response to the survey.</p>
Water withdrawal within site water footprint, excluding non-contact cooling water			
Total water withdrawal within site water footprint, excluding non-contact cooling water (million m ³)	<p>Water withdrawal within site footprint, excluding non-contact cooling water, refers to water withdrawn from any of the following sources:</p> <ul style="list-style-type: none"> • Municipal water refers to a public water supply. • Groundwater refers to water held in, and can be removed from, an underground formation. • Rainwater refers to water sourced from rainwater harvesting, which is the collection and storage of rain for use at a site. 	<p>Total water withdrawal within site water footprint, excluding non-contact cooling water is the sum of water use within site footprint from municipal, groundwater and rainwater sources.</p> <p>Data is collected from sites through AZ SHE System. It is reported on a monthly basis and reviewed globally every quarter.</p> <p>Water withdrawal is calculated based on meter readings or invoices for purchased water. In cases metering or invoices are unavailable, estimates are based on historic average.</p>	<p>All markets and business units are fully in scope; however, water withdrawal reporting is limited to specific sites for which water-withdrawal data is captured and reported.</p> <p>Leased sites are included when they meet internal thresholds and excluded when they do not. The threshold considers factors such as floor area, number of full-time employees (FTEs), lease duration, and data availability.</p> <p>Our target to reduce water withdrawal by 20% by 2025, based on a 2015 baseline, excludes water withdrawn for non-contact cooling.</p>
Chemical oxygen demand – effluent leaving our sites (tonnes)	<p>Chemical oxygen demand (COD) refers to the amount of oxygen required to chemically oxidize organic material and inorganic nutrients in the waste generated and removed from AstraZeneca owned / operated sites.</p>	<p>Data is collected from sites through AZ SHE System and reported in accordance with local permit requirements. It is reviewed globally every quarter.</p> <p>When COD is measured indirectly, it may be estimated using 6-day Biological Oxygen Demand (BOD) or Total Organic Content (TOC) measurements. If COD is estimated from BOD or TOC, the conversion factor used must be documented.</p>	<p>All sites that report into the AZ SHE System are in-scope, though COD is only relevant for some sites.</p>

Metric (Units)	Definition	Methodology	Boundary
Non-contact cooling water (million m³)			
Direct from fresh surface water - volume fully returned after use	<p>Direct from fresh surface water refers to the water withdrawn from sources such as rainwater, rivers, lakes, wetlands and streams with low concentrations of dissolved solids.</p> <p>Volume fully returned after use refers to the quantity of water that is extracted and subsequently returned to the same or a similar body.</p>	Data is captured manually on an annual basis.	All sites that report into the AZ SHE System are in-scope, though water withdrawn directly from freshwater volume is only relevant for some sites.
Water withdrawal by water scarcity rating for sites with over 10,000 m³ water per year (including non-contact cooling water)			
High scarcity rating (m ³)	High scarcity rating refers to risk score greater than or equal to 3.4 and up to 5.0.	Water scarcity ratings are taken from the WWF Water Risk Filter 2.0 basin risk assessment. Data are extracted triennially, and on an ad hoc basis for new site locations. The last extraction was in 2023. This is applied across 2023 to 2025 data set.	Total water withdrawal of owned or operated sites which consume greater than 10,000m ³ of water annually. This includes non-contact cooling water.
Medium scarcity rating (m ³)	Medium scarcity rating refers to risk scores greater than or equal to 2.6 and less than 3.4.	See above.	See above.
Percentage of water withdrawal by AstraZeneca in medium & high scarcity rating areas (%)	Refers to the percentage of water withdrawal in medium and high scarcity areas.	<p>See above.</p> <p>Calculation: The total water withdrawn from owned or operated sites exceeding 10,000 m³ annually in areas with high and medium water scarcity, then divided by the total m³ of water consumed by these sites across all scarcity ratings, then multiplied by 100.</p>	See above.

Metric (Units)	Definition	Methodology	Boundary
Waste management			
Total waste (tonnes)	Waste refers to any material that AstraZeneca intends to or is required to discard, including waste generated from spills and releases during current operations are included.	<p>Total waste consists of the total amount of waste recycled, sent to landfill, and incinerated with or without energy recovery, as well as waste categorised as other treatment.</p> <p>Data is captured from sites through AZ SHE System. It is reported on a monthly basis and reviewed globally every quarter.</p> <p>Waste is calculated based on invoices. In cases invoices are unavailable, estimates are based on historic average.</p> <p>Calculation: Total waste is the sum of hazardous waste and non-hazardous waste.</p>	<p>Waste from land remediation including all material disposed of during activities to remediate land and/or groundwater contaminated prior to AstraZeneca's formation, materials released into the atmosphere or drainage systems unless required by local legislation, and waste from construction and demolition are excluded.</p> <p>Leased sites are included when they meet internal thresholds and excluded when they do not. The threshold considers factors such as floor area, number of full-time employees (FTEs), lease duration, and data availability.</p>
Total recycling (tonnes)	Recycling refers to material that exits the site for reprocessing and conversion to a new, useful material.	See above.	See above.
Total recycling as a percentage of total waste	This quantifies the proportion of waste that is recycled relative to the total waste generated.	See above.	See above.
Total waste to landfill (tonnes)	Landfill refers to material that exits the site for the deposit of the waste onto or into land.	See above.	See above.
External waste avoided - reuse and by-product (tonnes)	<p>Reused refers to materials used outside of original AZ site boundaries for its original purpose, or an alternative purpose in its original form without any structural change in materials.</p> <p>By-product refers to materials used or reused as a useful, valuable raw material in another process externally, often involving payment from a specific external party for the material in alignment with local regulations to reclassify the material. May involve minimal processing prior to exiting the site (e.g. shredding).</p>	<p>Data is captured from sites through AZ SHE System. It is reported on a monthly basis and reviewed globally every year.</p> <p>Calculation: Total external waste avoided is the sum of site hazardous external waste avoided and site non-hazardous external waste avoided.</p>	Any material that AstraZeneca has identified that is to be reused or as by-product, externally to the site.

Metric (Units)	Definition	Methodology	Boundary
Non-hazardous waste (tonnes)	<p>Non-hazardous waste refers to the waste generated which is classified as non-hazardous in accordance with the legislation that applies to the site.</p> <p>The definitions of non-hazardous vary globally and may change as legislation evolves.</p>	<p>Total non-hazardous waste consists of the total amount of non-hazardous waste recycled, sent to landfill, and incinerated with or without energy recovery, as well as waste categorised as other treatment.</p> <p>Waste is calculated based on invoices. In cases invoices are unavailable, estimates are based on historic average.</p>	See total waste
Hazardous waste (tonnes)	<p>Hazardous waste refers to the amount of waste generated which is classified as such under the legislation that applies to the site.</p> <p>The definitions of hazardous vary globally and may change as legislation evolves.</p>	<p>Total hazardous waste comprises the total amount of hazardous waste recycled, sent to landfill, and incinerated with or without energy recovery, along with waste classified as other treatment.</p> <p>Waste is calculated based on invoices. In cases invoices are unavailable, estimates are based on historic average.</p>	See total waste
Green Labs Programme			
Number of My Green Lab Certifications	<p>My Green Lab certification provides scientists and the teams that support laboratories with actionable ways to make meaningful change. The certification is run by the external company My Green Labs.</p>	<p>The count is provided by My Green Lab following completion of its certification programme.</p>	All active certifications are included.
AZ Forest (cumulative, million)			
Number of trees planted	<p>AZ Forest is a global initiative which aims to plant and maintain 200 million trees across six continents by 2030.</p> <p>Trees planted refers to number of trees planted since 1 January 2020 through the AZ Forest programme.</p>	<p>Total number of trees planted is tracked by suppliers and partners for each project. Project data are captured through the AZ Forest online portal and through reports and evidence provided by partners.</p> <p>Data for Indonesia, Australia and Scotland are captured on the One Tree Planted Stacker Portal platform, along with photos of tree planting, maps and quarterly reports.</p> <p>The cumulative figure represents all trees verified as planted to date, including prior years. Once trees are verified as planted, the metric is not adjusted retrospectively for subsequent changes in project status or other events. If partners provide trees planted numbers after the reporting date, the relevant year's annual figure and cumulative total are revised in the next reporting cycle. Figures are verified internally by AZ Forest team members. These figures and supporting evidence are then verified through third party assurance.</p>	<p>All projects funded by the global AZ Forest programme are in scope for reporting. This total includes trees from projects in which monitoring was originally planned but has been discontinued due to project closure.</p> <p>Locally managed projects and trees planted via CatAlyZe (employee reward) contributions are excluded.</p>

Metric (Units)	Definition	Methodology	Boundary
Compliance Summary			
Prosecution	Prosecutions refers to charges laid or ongoing investigation pending legal action taken in a civil or criminal court against AstraZeneca.	Data is captured from sites through AZ SHE System.	
Enforcement action	Enforcement actions refers to any formal administrative or judicial enforcement proceeding, notices of violation or similar action by a regulator that requires the company to do, or not do, something.	See above.	
Regulatory warning or alert	Regulatory warning/alerts refers to any formal notification received from a regulator stating that the company is in violation of an applicable Safety, Health, Environment requirement, which if not corrected or repeated could incur prosecution or enforcement action.	See above.	
Major external Safety, Health and Environmental compliance violation	Violation of external applicable Safety Health Environment requirement, which if not corrected or if repeated has the potential to become the subject of an external SHE complaint, prosecution, or enforcement action.	See above.	
Awaiting regulatory outcome	Number of events that are still awaiting regulatory outcome or where the AstraZeneca investigation is still ongoing.	See above.	
Environmental violations	Environmental violations refers to cases that result in a fine more than US\$10,000.	See above.	
Financial penalties relating to above (USD)	Financial penalties above US\$10,000 as a result of the above.	See above.	

Health equity and Health systems resilience

Metric (Units)	Definition	Methodology	Boundary
Accessible and affordable healthcare (cumulative, million)			
Number of people positively impacted	People positively impacted includes: patients treated by our Oncology, BioPharmaceuticals, and Rare Disease medicines which is an estimate of the average number of patients on therapy in the reporting year; people reached through awareness initiatives; people screened through health equity programmes; and healthcare workers trained.	<p>The number of patients treated by our medicines is estimated based on volume of inventory sold, assumed days of therapy and average level of patient adherence to the treatment. An individual patient may be treated for different diseases with more than one medicine. Average patient adherence rates are defined by the AstraZeneca Global Insights team by therapy area and are a key assumption used in the estimate. As an average, actual patient adherence rates may differ.</p> <p>The number of people reached is aggregated from each programme and each market as relevant. The number of healthcare workers trained refers to those who receive education through in-person classroom-style sessions, online courses and attending symposiums.</p> <p>Figures are cumulative, with 2024 as the baseline year, and encompass all historical data since then.</p>	
Number of people positively impacted from underserved groups	<p>Underserved groups is defined as all patients in low- and middle-income countries in line with the World Bank Group country classification by income level, in addition to rare disease patients.</p> <p>We recognise that underserved communities exist in all countries regardless of income classification, however current publicly available data do not provide a detailed breakdown of underserved populations in high-income and upper-middle-income countries.</p>	See above.	

Metric (Units)	Definition	Methodology	Boundary
People reached by access to healthcare programmes (cumulative, million)			
Healthy Heart Africa (HHA)	<p>Healthy Heart Africa was launched in 2014 to address the increasing burden of cardiovascular diseases in Africa.</p> <p>People reached refers to the number of people screened through the programme.</p>	<p>Data is captured by markets on a monthly, quarterly, and annual basis using data from patient records.</p> <p>Total people reached from each market is combined to determine the total people reached for the programme.</p> <p>Total people reached over the years may not represent unique individuals.</p> <p>The total people reached in the reported year is combined with historical data (2015 – present) to determine a cumulative figure.</p>	<p>All markets in the HHA programme are within scope: Kenya, Ethiopia, Tanzania (including Zanzibar), Ghana, Uganda, Senegal, Cote d'Ivoire, Rwanda and Nigeria.</p>
Young Health Programme (YHP)	<p>People reached refers to direct beneficiaries, primarily young people (aged 10-24), who the YHP has had direct contact with through engagement in a community activity, including peer educators trained. This includes in-person and online events.</p>	<p>Data is captured by country from our NGO partners and country leads on a quarterly and annual basis, depending on the nature of the contract.</p> <p>Data from YHP small grant recipients is collected by AstraZeneca's youth leadership partner at year-end.</p> <p>The total people reached from each country is combined to determine total people reached for the programme.</p> <p>The total people reached in the reported year is combined with historical data (2010 – present) to determine a cumulative figure.</p>	<p>All countries involved in the YHP are in scope as well as all small grant recipients.</p> <p>Excludes people reached indirectly, such as through mass awareness campaigns.</p> <p><u>See list of current and completed programmes.</u></p>
Total people reached (all current and historic programmes)	<p>People reached is defined per programme, depending on the operations of the specific programme.</p>	<p>The total people reached figures from each in-scope healthcare programme are combined to determine total people reached for all programmes.</p> <p>Historical data is taken from reported figures in previous years' sustainability reports.</p> <p>The total people reached in the reported year is combined with historical data to determine a cumulative figure.</p>	<p>The following current and historic programmes: Healthy Heart Africa; Young Health Programme; Healthy Lung Programme; and Phakamisa.</p>
Healthcare workers trained (cumulative)			
Total healthcare workers trained (all current and historic programmes)	<p>Healthcare workers trained is defined per programme, depending on the operations of the specific programme.</p>	<p>The total healthcare workers trained from each in-scope healthcare programme are combined to determine total healthcare workers trained, healthcare workers trained might be double counted.</p> <p>The total healthcare workers in the reported year are combined with historical data (2015 – present) to determine a cumulative figure.</p> <p>Historical data is taken from reported figures in previous years' Sustainability Reports.</p>	<p>The following current and historic programmes: Healthy Heart Africa; Young Health Programme; Healthy Lung Programme; Phakamisa; Heart Failure Project; Omnicongress; and Together on the medical road.</p>

Metric (Units)	Definition	Methodology	Boundary
Affordability			
People reached by patient access programmes (PAP) (cumulative, million)	<p>People reached refers to patients diagnosed and received medication through PAP.</p> <p>Patient access programmes refers to the following:</p> <p>Patient assistance programmes refers to programmes whereby products are fully donated without expectation of payment from the patient to access the programme.</p> <p>Patient affordability programmes aim to close the gap in ability to pay for out-of-pocket patients in over 17 Low- or Middle-Income Countries (LMIC).</p> <p>Patient support programmes are initiatives where AstraZeneca covers costs, offers, or facilitates services related to drug administration, follow-up, or disease management.</p> <p>People reached through these programs can include a variety of components such as diagnostics, drug administration costs, tests, procedures, education, and awareness. They are accessible to both insured and self-pay patients and can function independently or in collaboration with payers to address pricing challenges.</p>	<p>Data is captured and calculated through an internal data dashboard by PAP managers on an annual basis by market.</p> <p>The metric is a cumulative figure and 'people reached' may not represent unique individuals.</p> <p>Total people reached is the sum of people reached reported by each country.</p>	<p>Programmes cover approximately 27 countries/ regions globally.</p> <p>Two programmes from Alexion are included from 2023, and another four programmes were added in 2024.</p>
Philanthropy			
Total community investment (USD, million)	<p>Community investment refers to donations made to non-profit organisations that are charitable in nature and the primary objective is to have a positive community impact. AstraZeneca may only receive a modest benefit back to the company.</p>	<p>Data is captured through AstraZeneca's community investment database. This methodology is aligned with the Business for Societal Impact Community Investment Framework.</p> <p>Product donations, cash contributions, in-kind giving, management overheads associated with running AstraZeneca's community investment activities and volunteer hours (USD million equivalent) are combined for 'total community investment' figure.</p>	<p>Payments and donations made during the financial year are in scope.</p> <p>Payments from a Foundation account and Patient Assistance Programmes are excluded from total community investment since they are separately reported.</p>
Non-profit organisations funded by AstraZeneca	<p>Non-profit organisations refers to the total number of charitable organisations receiving community investment contributions from AstraZeneca.</p>	<p>Data is captured through AstraZeneca's community investment database.</p> <p>Duplicates are removed to avoid double counting.</p>	<p>The reported number includes contributions made through AstraZeneca and Alexion Foundations. Within scope are financial, in-kind and product donations.</p> <p>The metric excludes Patient Assistance Programmes.</p>

How we do business

Metric (units)	Definition	Methodology	Boundary
Sustainable innovation			
Number of new molecular entities (NMEs) approvals (cumulative)	NME approvals refers to medicines approved since October 2022 to meet our Ambition 2030.	Data is collected via a monthly reporting process, captured on AstraZeneca's project planning and forecasting tool, and maintained by the Global Portfolio and Project Management team. Approvals for the same drug in different countries are considered distinct regulatory events.	
Number of pipeline progression events	Pipeline progression events refers to the commencement of Phase II, and progression to an investment decision. The commencement of Phase II refers to when the first patient consents in the Phase II of the trial. An investment decision may be a Phase II pivotal investment decision or a Phase III investment decision, where a positive outcome is expected to proceed to regulatory filing in the subsequent phase. For further information on Phase II and III, see page 9 on Annual Report 2025.	See above.	
Number of regulatory events	Regulatory events refers to submissions or approvals for our medicines in major markets.	See above.	

Metric (units)	Definition	Methodology	Boundary
Patient safety & product quality			
Number of inspections from health authorities relating to Good Manufacturing Practice (GMP) and Good Distribution Practice (GDP)	<p>Health authorities refers to government agencies that are responsible for protecting and promoting public health through the supervision of pharmaceutical products.</p> <p>Inspections refers to assessments of manufacturing facilities and processes for regulated products to verify compliance with relevant regulations, by health authorities.</p> <p>GMP is part of a quality management system which ensures that products are consistently produced and controlled to the quality standards appropriate to their intended use and as required by the marketing authorisation. This covers commercial product manufacture and marketing companies' GDP, products in development going into clinical trials and device manufacturing.</p> <p>Inspection is counted once observations have been received.</p>	Data is captured on an internal quality management system by the Operations Quality Assurance team.	
Number of critical findings from health authorities relating to Good Manufacturing Practice and Good Distribution Practice	Critical findings are deficiencies with GMP or GDP reported by health authorities, that provide an immediate and significant risk to patient safety. A 'critical finding' can also be a combination or repetition of major findings that indicate a critical failure of GMP or GDP.	See above.	
Number of product recalls	<p>Recalls can be initiated at various levels:</p> <p>Level 1 is at wholesale level</p> <p>Level 2 is at pharmacy/hospital level</p> <p>Level 3 is at patient level</p>	See above.	

Metric (units)	Definition	Methodology	Boundary
Cybersecurity and data privacy			
Number of material cybersecurity incidents	A material cybersecurity incident is defined as material unauthorised access, disclosure or disruption of information systems of data that significantly impacts the confidentiality, integrity or availability of critical assets, operations, or stakeholders.	Data is collected through incident reports, security logs and continuous monitoring tools. Designated cybersecurity and data privacy members are responsible for data collection.	
Number of material security breaches involving personal data	Material security breaches refers to material unauthorised access to personal data. A reported breach alone does not constitute a material breach.	See above.	
People			
Employee belief that in the last 12 months, I have improved my existing skills, or learned new skills, or had a development opportunity (%)	Employee belief refers to the positive response (agree and tend to agree) to each respective statement in our annual employee opinion survey, Pulse.	Data is captured annually through our Pulse survey conducted by HR and shared company-wide. Calculation: Total number of responses that either agree or tend to agree divided by total number of responses, then multiplied by 100.	
Employee belief that AstraZeneca is a great place to work (%)	See above.	See above.	
Business conduct			
Active employees trained on Code of Ethics (%)	Our Code of Ethics embodies our Values at work, including expected behaviours, principles and policies. It is the foundation of our global compliance programme. Trained refers to a mandatory requirement for those assigned the training on the day of official launch within each reporting year. Active employees refers to employees who are not currently on long-term sickness leave, parental leave, military service or garden leave.	Data is captured from our learning platform on a daily basis, from training rollout to the date when 100% of in-scope learners have been reconciled. When employees are not considered "active," our HR management system automatically updates the online learning platform to deactivate their access to mandatory training. Managers have the discretion to remove enrolments for those employees who are imminently leaving the company. Calculation: The number of employees who have received training on Code of Ethics divided by number of active employees, then multiplied by 100. Data is rounded to the nearest percent.	All active employees are in scope of the metric.

Metric (units)	Definition	Methodology	Boundary
Instances of non-compliance with the Code of Ethics	Non-compliance refers to conduct which is not in compliance with the AZ Code of Ethics (this includes breaches of the Code of Ethics and supporting policies and standards). Instances can involve multiple people.	AZethics' is a platform where anyone (AstraZeneca employees or third parties) can raise concerns about potential misconduct. To calculate the metric, a closed case report is run from AZethics. The data is filtered on cases closed in the period with a primary outcome of 'substantiated'.	Primary issues that relate to Human Resources are excluded, including employee relations, long-term absence, performance, reward concern, time & attendance, unfair labour practices, waste of time & resources and other inquiries.
Concerns reported through the company helpline	Company helpline refers to AZethics. Concerns can be expressed online, by phone, mobile, letter or email to a reporting mailbox.	Data is captured and exported from AZethics on a quarterly and annual basis at year-end. An intake report from AZethics is filtered to show "helpline" intake methods, including hotline phone, hotline web, hotline mobile, reporting mailbox (includes Global Compliance mailbox), letter, email (retired).	See above.
Percentage of employees who feel we have a 'speak up' culture	Employee belief refers to the positive response (agree and tend to agree) to each respective statement in our annual employee opinion survey, Pulse.	Data is captured annually through our Pulse survey conducted by HR and shared company-wide. Calculation: Total number of responses that either agree or tend to agree divided by total number of responses, then multiplied by 100.	
Clinical trial transparency (cumulative)			
Studies shared with external research teams	Studies shared refers to the number of times a unique study is shared.	Data is captured using an internal system and reported on an annual basis. Studies can be shared multiple times with different researchers; in such cases, they are counted once to avoid double counting. Filtering is applied to exclude studies with the status 'request' and retain the studies that have been shared.	
Publicly available trial summaries	Trial summaries refers to the documentation of a clinical trial.	Data is captured annually on Trial Summaries, a public portal.	

Metric (units)	Definition	Methodology	Boundary
Human rights			
Countries that completed the human rights survey	Human rights survey refers to a biennial survey sent to all human resources departments for countries where we have employees.	Data is captured through an internal tracker.	Alexion is included from 2024.
Countries that have a relationship with trade unions (%)	This refers to Question 4.1 in the survey, "Do countries have relationships with trade unions?"	See above. The metric is calculated by dividing the number of countries with trade union relationships by the total number of countries where we have employees, multiplied by 100.	See above.
Responsible supply chain			
High-risk supplier audits	High-risk refers to the classification of an external supplier. Supplier audits refers to a visit where information is gathered on management systems. Audits can be on-site or remote and either conducted by AstraZeneca or outsourced. These audits gather information on each supplier's governance and management systems, ethics, human rights, health, safety and environmental compliance, and risk assessment.	This is the sum of Pharmaceutical Supply Chain Initiative (PSCI) audits and in-house audits conducted in the reporting year. Data is captured manually on an annual basis.	All external suppliers may be considered in-scope. PSCI audits on our Tier 1 Global Suppliers managed by the External Supply and Manufacturing team are included. The audit programme also includes some Pharmaceutical Technology and Development (PT&D) Clinical suppliers. Certain Alexion suppliers are not in scope.
Percentage suppliers by spend assessed by EcoVadis	EcoVadis is a sustainability rating that rates businesses' sustainability performance based on four key categories: environment, labor and human rights, ethics and sustainable procurement. The platform provides comprehensive details on suppliers that have been evaluated, including their respective scorecards.	Suppliers' EcoVadis score is captured on a quarterly and annual basis through an internal dashboard. Spend data is sourced partly from AstraZeneca's financial systems, combined with Alexion spend data. The proportion of spend is determined using spend data from previous reporting year. Calculation: The total supplier spend rated by EcoVadis, divided by in-scope spend, then multiplied by 100.	Top 95% of supplier spend. Only valid scorecards are considered.
Percentage suppliers by spend assessed by EcoVadis that achieve >45	See above.	Calculation: The total supplier spend rated by EcoVadis having a score of 45 or above, divided by in-scope spend, then multiplied by 100.	See above.

Metric (units)	Definition	Methodology	Boundary
Animal use standards			
Total number of animals	Number of animals refers to the number of times an individual animal is assigned to complete a study. This includes the assignment of one animal to a single study or one animal assigned several times to different studies.	Data is captured on quarterly and annual basis through internal tracking systems for internal and external use. Alexion data is reported manually and combined with total number of animals from across AstraZeneca.	Animals used in collaboration studies are excluded from the scope of this metric owing to variance in the level of ownership.
Human biological samples			
Active projects using human foetal tissue (hFT)	Active projects refers to ongoing hFT projects that have been approved by the Human Biological Samples (HBS) Governance Council.	All use of hFT in projects should only proceed with HBS Governance Council approval, as per the HBS Global Standard. All AstraZeneca and Alexion projects should follow this route for approval. Project Leads report on project status annually to confirm if project remains active at the end of the reporting year. The number of active projects are those still ongoing as of year end.	
Active projects using human embryonic stem cells (hESC)	Active projects refers to ongoing hESC projects that have been approved by the Human Biological Samples (HBS) Governance Council.	All use of hESC in projects should only proceed with HBS Governance Council approval, as per the HBS Global Standard. All AstraZeneca and Alexion projects should follow this route for approval. Project Leads report on project status annually to confirm if project remains active at the end of the reporting year. The number of active projects are those still ongoing as of year-end.	

Metric (units)	Definition	Methodology	Boundary
Inclusion and diversity			
Women representation of AstraZeneca employees (%)	Women representation refers to the percentage of employees who are women at the point of reporting.	<p>Data is captured using a HR data insights platform on a rolling basis.</p> <p>The platform automatically pulls the input data from our HR data management systems to calculate the various reporting metrics according to the following employee groups:</p> <ul style="list-style-type: none"> • All management: manager (Level E) and above. • Senior middle management: director (Level F) and above. • Executive management: senior director (Level H) and above. • Senior Executive team (SET): the body through which the CEO exercises the authority delegated to him by the Board. The CEO leads the SET and has executive responsibility for the management, development and performance of the business. • Board of Directors: executive and non-executive directors who are collectively responsible for the success of AstraZeneca. • STEM-related positions: positions from scientific, engineering, information technology and management, manufacturing, and data and AI (included from 2025). • Revenue-generating functions: sales which exclude supporting functions (Human Resources, Finance, Global Corporate Affairs, Sustainability, Business Development Operations, Global Portfolio & Project Management, Legal). • Junior management: employees in line manager positions at career level E and below. 	
The proportion of women is based on data as of 31 December 2025.			
Ethnic minority representation for US employees(%)	Ethnic minority is defined as Black/African American, Hispanic or Latino, Asian, or ethnically diverse – others (includes employees who identify as other, two or more races, American Indian or Alaska Native, Native Hawaiian or other Pacific Islander).	<p>Employees self-identify their ethnicity during onboarding. Data is captured using a HR data insights platform on a rolling basis.</p> <p>Ethnic minority representation in the US is reported as a proportion of the total number of employees with disclosed ethnicity.</p> <p>The metric is based on data as of 31 December 2025.</p>	<p>All AstraZeneca employees based in the US and its territories are in-scope.</p> <p>In-scope as ethnic minorities are those that belong to a group of persons which constitutes less than half of the population in the entire territory.</p>

Metric (units)	Definition	Methodology	Boundary
Percentage of employees (by age group) (%)	Age group refers to three distinct age groups; under 30; 30-49; or over 50.	Data is captured using a HR data insights platform on a rolling basis. Metrics are calculated as follows: <ul style="list-style-type: none"> Age % <30: Total number of current employees aged under 30 as a proportion of total current employees at the point of reporting. Age % 30-49: Total number of current employees aged 30-49 as a proportion of total current employees at the point of reporting. Age % ≥50: Total number of current employees aged 50 and above as a proportion of total current employees at the point of reporting. The proportion is based on data as of 31 December 2025.	
Countries with supplier diversity programmes	Supplier diversity programme is a global initiative to encourage spend with small and diverse businesses while purchasing goods and services on behalf of AstraZeneca.	Data is counted once the programme was launched per country.	
Workforce safety and health			
Total reportable injury rate (per million hours worked) (employees)	Injury refers to a recordable incident of damage to a person due to an event or exposure in the work environment and can include the aggravation of a non-work-related, pre-existing condition. Reportable refers to an injury if it results in a fatality, days away from work, restricted work or medical treatment beyond first aid, loss of consciousness or a significant injury diagnosed by an HCP that may not meet other criteria. Our injury inclusion criteria aligns with the US Occupational Safety and Health Administration (OSHA) Record Keeping Rule, it will be counted and reported once validated.	Work hours are automatically imported into the AZ SHE System from our HR data management systems. Data is captured from sites through AZ SHE System. Reportable injuries are validated at the site level and reviewed by the Global SHE team. This is reported internally every quarter. Prior to 2025, total working hours for Alexion is exported from a HR data management systems and combined with total AstraZeneca working hours manually. Calculation: The number of reportable injuries is multiplied by 1,000,000, then divided by total hours worked.	
Collisions (per million kilometres driven)	Collisions refers to recordable incidents of damage involving AstraZeneca vehicles and personal vehicles being used for business purposes. Our Driver Safety Guidance establishes thresholds for recordable incidents based on the type of incident and monetary threshold of damage.	Local recording of collisions is carried out quarterly by local SHE leads. Data is captured from sites through AZ SHE System and aggregated on a quarterly and annual basis. For sites that collect distance in miles, the data is converted to kilometres before being entered into the System. The conversion factor applied is 1 mile equals to 1.61 kilometres. Calculation: The number of collisions is multiplied by 1,000,000, then divided by number of kilometres driven.	Excludes non-recordable incidents according to our Driver Safety Guidance. Excludes Alexion.

Metric (units)	Definition	Methodology	Boundary
Occupational illness rate (per million hours worked) (employees)	<p>An illness can be considered 'occupational' (work-related) if an exposure in the work environment caused or contributed to the condition or significantly aggravated a non-work related, pre-existing condition.</p> <p>Our inclusion criteria for injuries and occupational illnesses indicators align with the US OSHA Record Keeping Rule, it will be counted once the date is confirmed as occupational is entered and reported once validated.</p>	<p>See Total reportable injury rate.</p> <p>Prior to 2025, total working hours for Alexion is exported from an HR data management system and combined with total AstraZeneca working hours manually.</p> <p>Calculation: The number of reportable illnesses is multiplied by 1,000,000, then divided by total hours worked.</p>	
Lost time injury rate (per million hours worked) (employees)	<p>Lost time injury refers to an injury that requires time away from work.</p> <p>Our injury inclusion criteria aligns with the US Occupational Safety and Health Administration (OSHA) Record Keeping Rule, it will be counted and reported once validated.</p>	<p>See Total reportable injury rate.</p> <p>Prior to 2025, total working hours for Alexion is exported from a HR data management systems and combined with total AstraZeneca working hours manually.</p> <p>A full-time employee is assumed to work 38 hours per week. Part-time employees are reported proportionately based on their contracted weekly hours.</p> <p>Calculation: The number of reportable injuries requiring days away is multiplied by 1,000,000, then divided by total hours worked.</p>	
Lost time injury rate (per million hours worked) (construction contractors)	<p>See above.</p> <p>Construction contractors refers to workers employed and managed by third-party construction/ engineering companies, working on AstraZeneca capital projects.</p> <p>For AstraZeneca employees involved in construction activities, hours worked were estimated and incorporated into the calculation of this metric.</p>	<p>Injury data and hours worked of construction contractors are recorded by Global Engineering in the AZ SHE System on both a quarterly and annual basis.</p> <p>Calculation: The number of reportable injuries requiring days away is multiplied by 1,000,000, then divided by total construction contractor hours worked.</p>	All construction projects across AstraZeneca are included.
Fatalities (employees)	<p>Fatality refers to instances where a work-related injury/ illness results in death, regardless of the time intervening between injury/diagnosis and death.</p>	<p>Data on serious and fatal instances are captured in the AZ SHE System as soon as possible after the instance has occurred.</p>	
Fatalities (construction contractors)	<p>See above.</p>	<p>See above.</p>	All construction projects across AstraZeneca are included and are not site-specific.

Metric (units)	Definition	Methodology	Boundary
Employee satisfaction			
Employees that have at least one quality development discussion with their line manager (%)	Refers to the following statement within our Pulse survey: 'I have had at least one quality development discussion with my line manager so far this year'.	Data is captured annually through our Pulse survey conducted by HR and shared company-wide. Calculation: Total number of responses that either agree or tend to agree divided by total number of responses, then multiplied by 100.	
Employee belief in our strategy (%)	Employee belief refers to the positive response (agree and tend to agree) to each respective statement in our Pulse survey.	See above.	
Sustainability engagement survey score (%)	Refers to the following statement within our Pulse survey: 'I understand how I can contribute to AstraZeneca's sustainability priorities'.	See above.	
Talent attraction and retention			
Employee overall promotion rate(%)	Promotion refers to when an employee advances to a position that is classified at a higher grade.	Data is captured in HR data insights dashboard by our Workforce Insights and Analytics team. The dashboard uses data automatically pulled through from our HR data management systems. Calculation: Total number of promotions made during the reporting year divided by the average permanent headcount across those 12 months, then multiplied by 100.	
Employee turnover (%)	Employee turnover refers to the exit of a permanent employee, including those leaving on a voluntary or involuntary basis which includes retirement and death-in-service.	See above. Calculation: Total number of permanent exits (voluntary or involuntary) in the reporting year divided by the average permanent headcount across those 12 months, then multiplied by 100.	
Total amount spent on upskilling employees (USD, million)	Upskilling employees refers to the cost of training our employees beyond only role-specific requirements.	Data is captured through our financial reporting system, based on the classification of external training and development costs, on an annual basis.	The spend encompasses AstraZeneca Group's external training cost.

Metric (units)	Definition	Methodology	Boundary
Total learning hours	<p>Learning hours refers to the time spent by learners on completed courses and content through our learning platforms, in addition to time spent by learners on select licence-to-operate on-the-job courses.</p> <p>Learners refers to those individuals employed by AstraZeneca and external resources including those via outsourced service providers.</p>	<p>Data is captured through our learning and development platforms and calculated through our learning analytics dashboard on an annual basis.</p> <p>Data is based on either estimated or actual hours spent dependent on learning platform.</p>	All completed courses, articles, videos, and online content on Degreed, Cornerstone, Mindtools, and Percipio across the Group are in scope.
Average learning hours	Average learning hours refers to the average number of hours spent on completed courses and content.	<p>The total number of learners is recorded in AstraZeneca's HR data management systems and is updated monthly into the learning analytics dashboard. The learner count is based on data as of 31 December 2025.</p> <p>Calculation: Total learning hours divided by the total number of learners.</p>	Learners include AstraZeneca employees and external resources, such as contractors from outsourced service providers.
Voluntary employee turnover – recent hires (%)	<p>Voluntary turnover refers to the exits of a permanent employee at their own discretion, otherwise known as resignations.</p> <p>Recent hires refers to employees whose start date of employment at AstraZeneca is less than 2 years ago.</p>	<p>See above.</p> <p>Calculation: Total number of permanent exits (voluntary, recent hires) in the reporting year divided by the average permanent headcount across those 12 months, then multiplied by 100.</p>	
Voluntary employee turnover – total (%)	See above.	<p>See above.</p> <p>Calculation: Total number of permanent exits (voluntary) in the reporting year divided by the average permanent headcount across those 12 months, then multiplied by 100.</p>	
US Food and Drug Administration (FDA) Statistics			
Total FDA Recalls	Recalls refers to a method of removing products from the market that are in violation of laws administered by the FDA, in order to correct or replace them.	Data is captured on an internal quality management system on a rolling basis.	Data only include recalls from the FDA. This information is publicly available on the FDA website .
Total FDA Observations	Observations refers to a form used by the FDA to document and communicate concerns discovered during an inspection.	Data is captured on an internal quality management system on a rolling basis.	Data only include observations from the FDA closed within the reporting year.
Total FDA Inspections	Inspections refers to an assessment of manufactures of FDA regulated products to verify they comply with the relevant regulations.	Data is captured on an internal quality management system on a rolling basis.	Data only include inspections from the FDA closed within the reporting year.

Metric (units)	Definition	Methodology	Boundary
Quality Manufacturing			
Internal quality audits of AstraZeneca suppliers	Internal quality audits of AstraZeneca suppliers refers to the audits performed by AstraZeneca Global Quality Audit Team on suppliers who are expected to provide goods and services according to GMP and GDP. These audits aim to confirm the suppliers are in compliance with their Quality System, industry regulations and the quality service agreements with AstraZeneca.	Data is captured on an internal quality management system by the Global Quality Audit team. Audit is counted based on the actual start date.	All suppliers are in scope.
Internal quality audits of AstraZeneca sites	Internal quality audits of AstraZeneca sites refers to audits performed by Global Quality Audit Team on our own facilities which perform or support GMP and GDP activities. These audits ensure compliance with AstraZeneca's Quality System and adherence to industry regulations.	See above.	All AstraZeneca Operations and Marketing Company sites are in scope. Data only includes AstraZeneca-owned facility.

Data and methodology adjustments

Regular review of the data is carried out to ensure accuracy, consistency and reflect major business change, which has led to changes to reported figures in data in previous years. Key changes include:

Site energy management

RE100: Renewable electricity consumption

2024 data updated to align with the latest RE100 guidance.

Scope 3

Category 1 : Purchased goods and services; Category 4: Upstream transportation and distribution; Category 6 : Business travel

AstraZeneca has revised its spend data methodology. Additional improvements have been made to classification of spend along with identification of spend that should be excluded. Changes have been applied to all historic data

In addition, the 2024 version of Comprehensive Environmental Data Archive (CEDA) emission factors, adjusted by price indexes for the relevant year were applied to 2019-22 data, bringing consistency in the CEDA model used.

Category 1: Purchased goods and services

AstraZeneca has aligned the classification of capital goods for Scope 3 reporting with financial reporting. This change has resulted in some spend/ emissions moving from Category 1 to Category 2.

Category 2: Capital goods

AstraZeneca has aligned the classification of capital goods for Scope 3 reporting with financial reporting. Changes have been applied historically.

Category 9: Downstream transportation and distribution

Assumptions used for estimating patient travel were improved. The change had an immaterial impact and therefore has not been applied to historic data.

Category 8 : Upstream leased assets

AstraZeneca has updated its reporting boundary which has led to some leased assets moving from Scope 3 into Scope 1 & 2. Changes have been applied historically.

Supply chain engagement (% spend with verified SBTs)

Category 6 – Business travel

2024 percentage of supplier spend in category 6 has been revised following a review of the verification status of a major supplier.

Water withdrawal within site water footprint, excluding non-contact cooling water

Total water withdrawal

2024 data has been revised due to alignment in rounding.

Patient safety and product quality

Number of inspections from health authorities relating to Good Manufacturing Practice and Good Distribution Practice

Number of critical findings from health authorities relating to Good Manufacturing Practice and Good Distribution Practice

The metric name and boundary was updated following the integration of inspections on marketing companies into the population of the data set.

Business conduct

Concerns reported through the company helpline

2024 data has been revised due to a review of the methodology and alignment between systems.

Workforce safety and health

Total reportable injury rate (per million hours worked)

Collisions (per million kilometres driven)

Occupational illness rate (per million hours worked) (employees)

Lost time injury rate (per million hours worked) (employees)

Data has been revised following a review of the calculation process and completion of incident investigation post-publication.

Talent attraction and retention

Total amount spent on upskilling employees

2024 data has been revised due to an update to the reporting methodology, which now comprises all external training and development costs extracted from our financial reporting system.